



for the Palm Computing Platform

Deluxe
Version 2.0

User Documentation



Bachmann Software & Services, LLC

Handheld & Wireless Software & Consulting Services

Creators of Bachmann Print Manager & PrintBoy

PrintBoy copyright 1999-2001 by Bachmann Software and Services, LLC and its licensors. All rights reserved.

This documentation may be printed by the licensee for personal use. No part of this documentation may be reproduced or transmitted in any form by any means, electronic or mechanical, including photocopying, recording, or any information storage and retrieval system, without permission in writing from Bachmann Software and Services, LLC.

Bachmann Software and Services, PrintBoy, the PrintBoy logo, Bachmann Print Manager, PrintBoy Deluxe, PrintBoy Scribe, PrintBoy Documents, PrintBoy Spreadsheet, and the Bachmann Software and Services logo are registered trademarks of Bachmann Software and Services.

All software and documentation are subject to the license agreement found at the end of this document.

How to Contact Bachmann Software:

Bachmann Software and Services, LLC
270 Sparta Ave, Suite 104318
Sparta, NJ 07871
USA

To order licenses for PrintBoy Deluxe, any of the individual PrintBoy products or any other Bachmann Software products, or if you have licensing

Questions:

Voice: (973) 729-9427

Fax: (973) 729-8553

Or visit us on the World Wide Web: <http://www.bachmannsoftware.com>

For Technical Support please visit us on the Web for the most recent software updates, answers to Frequently Asked Questions, or e-mail us at support@bachmannsoftware.com
Ordering Information

Bachmann PrintBoy License Agreement

PLEASE READ THIS LICENSE CAREFULLY BEFORE USING THE SOFTWARE. BY USING THE SOFTWARE YOU ARE AGREEING TO BE BOUND BY THE TERMS OF THIS LICENSE. IF YOU DO NOT AGREE TO THE TERMS OF THIS AGREEMENT, PROMPTLY DESTROY ALL COPIES OF THE SOFTWARE.

1. License. The application, demonstration, system and other software accompanying this License, whether on disk, read only memory or on any other media (the "Software"), the related documentation and fonts are licensed to you by Bachmann Software and Services and its Licensors. This license allows you to use the Software on a single computer. You may use a copy of the software on a home or portable computer as long as the extra copy is never loaded at the same time the software is loaded on the primary computer on which you use the Software. You may make one copy of the Software in machine readable form for backup purposes. You also transfer all your license rights in the Software, the backup copy of the Software, the related documentation and a copy of this License to another party, provided the other party reads and agrees to accept the terms and conditions of this License.
2. Restrictions. The Software contains copyrighted material, trade secrets, and other proprietary material. In order to protect them, and except as permitted by applicable legislation, you may not decompile, reverse engineer, disassemble or otherwise reduce the Software to a human perceivable form. You may not modify, rent, lease, loan, distribute or create derivative works based upon the software in whole or in part. You may use the Software to develop freeware or shareware.
3. You may not use the Software to create a product which competes in any way with the Software.
4. Software end users may not use the "run-time modules" or any other Software components for development purposes.
5. You agree to indemnify, hold harmless and defend Bachmann Software and Services, LLC and its suppliers from and against any and all claims or lawsuits including attorneys fees that arise or result from the use and distribution of your product. If any of the conditions set forth in paragraphs 1 through 4 are breached, such breach shall constitute an unlawful use of the Software, and you shall be prosecuted to the full extent of the law. Furthermore, you shall be liable to Bachmann Software and Services, LLC for all damages caused by such breach and unlawful use of the software, including attorney's fees and costs incurred in any action, lawsuit or claim brought or filed to redress the breach of this agreement.

LIMITED WARRANTY

LIMITED WARRANTY. Bachmann Software and Services, LLC warrants that the Software will perform substantially in accordance with the accompanying written materials for a period of thirty (30) days from the date of receipt.

CUSTOMER REMEDIES. Bachmann Software and Services, LLC and its suppliers' entire liability and your exclusive remedy in the event of a defect in materials and workmanship of the Software under normal use during the Limited Warranty period shall be, at Bachmann Software and Services, LLC's option, either a) return of the price paid by you in exchange for all Software contents including written materials; or b) repair or replacement of the Software that does not meet Bachmann Software and Services, LLC's Limited Warranty and which is returned to Bachmann Software and Services, LLC with a copy of your receipt. This Limited Warranty is void if failure of the Software has resulted from accident, abuse or misapplication. Any replacement Software will be warranted for the remainder of the original warranty period or ten (10) days, whichever is longer.

NO OTHER WARRANTIES. There are no other warranties to the maximum extent permitted by applicable law. Bachmann Software and Services, LLC and its suppliers disclaim all other warranties, either express or implied, including but not limited to implied warranties of merchantability and fitness for a particular purpose, with regard to the Software, the accompanying written materials and any accompanying hardware.

NO LIABILITIES FOR CONSEQUENTIAL OR INCIDENTAL DAMAGES. To the maximum extent permitted by law, in no event shall Bachmann Software and Services, LLC or its suppliers be liable for any damages whatsoever (including without limitation, damages for loss of business profits, business interruption, loss of business information, or any other pecuniary loss) arising out of the use of or inability to use this Bachmann Software and Services, LLC product, even if Bachmann Software and Services, LLC has been advised of the possibility of such damages.

BACHMANN PRINTBOY LICENSE AGREEMENT	4
1. INTRODUCTION: WELCOME TO PRINTBOY DELUXE.....	8
1.1. What is PrintBoy Deluxe?.....	8
1.2. What's New in PrintBoy Deluxe.....	9
1.2.1. Expanded Applets and Functionality	9
1.2.2. The PrintBoy Shell	10
1.2.3. Powered by Bachmann Print Manager	10
2.0 GETTING STARTED WITH PRINTBOY DELUXE.....	11
3.1. Choosing Your Default Printer	13
3.2. Choosing a Printer Driver	13
3.3. Verifying Printer Settings.....	14
4. REMOVING PRINTBOY DELUXE.....	15
5. PRINTING FROM PRINTBOY DELUXE.....	16
5.1. The PrintBoy Shell Application.....	16
5.2. PrintBoy/Address	17
5.3. PrintBoy/DateBook.....	18
5.4. PrintBoy/To Do.....	19
5.5. PrintBoy/Memo.....	20
5.6. PrintBoy/Mail	21
5.7. PrintBoy/Clipboard	22
5.8. PrintBoy/Documents	23
The File List	24
Printing Options.....	24
Command Buttons	24
Printing a Document	24
5.9. PrintBoy Spreadsheet.....	26

The File List	26
Printing Options.....	27
Command Buttons	27
Printing a Spreadsheet	27
5.10. PrintBoy/Note	30
5.11. PrintBoy/Scribble	30
APPENDIX A: PRINTER COMPATIBILITY MATRIX.....	31

1. Introduction: Welcome to PrintBoy Deluxe

Thank you for selecting Bachmann PrintBoy Deluxe!

1.1. What is PrintBoy Deluxe?

PrintBoy Deluxe takes our very popular PrintBoy application, and adds new key printing features, PrintBoy Documents, PrintBoy Spreadsheet, and PrintBoy Scribe, our newest PrintBoy Products.

PrintBoy is a Palm software application that enables you to print information from your Palm™ Organizer directly to your printer through an infrared or serial connection. PrintBoy comes complete with a suite of plug-in “applets”, small program modules that support printing of addresses, appointments, to-dos, memos, e-mail and other information stored on your Palm device.

- **PrintBoy is the only Palm software products that prints a graphical month at a glance calendar.**

PrintBoy Documents is a Palm software application that enables you to print documents that you have stored on your Palm™ Organizer directly to your printer through either an infrared or serial connection.

PrintBoy Documents supports the most popular file formats in use today by Document programs:

- The Doc format has become a standard for storage of text-based content on Palm devices. Various vendors, all of which support the Doc format, have released a large number of converters, editors and readers.
- The Wordsmith RTF format is an enhanced document storage format used by Blue Nomad's popular WordSmith word processing application for Palm handhelds.

Converters are programs that run on the host (Windows or Mac). They transform files of various formats (Text, HTML, Word, RTF, PDF, etc) into PDB files that are in the Doc format, and in many cases adds the PDB files to the Palm Install Tool for the next HotSync.

Readers are Palm applications that can display (but not necessarily edit) PDB files that are in the standard Doc format. Typically these programs provide very basic navigation and formatting features.

Editors are Palm applications that can edit, and even create, Doc formatted files on the Palm. Many of these applications add “extensions” to the Doc format to support enhanced features such as text effects, formatting, etc.

- **PrintBoy Documents is the first standalone commercial software product that allows Palm users to print their documents directly from their handheld devices to virtually any printer.** When combined with a capable Converter program, PrintBoy Documents effectively can support printing of Text, HTML, Word, RTF, and PDF files stored on the Palm. It prints to an 8 1/2 by 11 size paper.

PrintBoy Spreadsheet is a Palm software application that enables you to print spreadsheets that you have created and stored on your Palm™ Organizer using the popular QuickSheet program from Cutting Edge Software. PrintBoy Spreadsheet lets you print these spreadsheet files directly to your printer through either an infrared or serial connection, in a format that is very similar to what you would expect if you printed a spreadsheet from your PC. PrintBoy Spreadsheet is in fact the first standalone commercial software product that allows Palm users to print their spreadsheets directly from their handheld devices to virtually any printer.

PrintBoy Deluxe comes with two additional PrintBoy applets:

PrintBoy Text Note is a PrintBoy applet that enables you create a text only note, using Graffiti or the keyboard on your Palm and print that information from your Palm™ Organize directly to your printer through an Infrared or Serial connection. If you don't have access to a printer, this applet will save the note until you can print or decide to create another text note.

PrintBoy Scribble Note is a PrintBoy applet that enables you create a scribble note, on your Palm and print that information from your Palm™ Organize directly to your printer through an Infrared or Serial connection. If you don't have access to a printer, this applet will save the note until you can print or decide to create another scribble note.

Your Palm is always with you and it is great at taking notes. These new PrintBoy applets lets you take notes on your Palm and print it immediately, so non- palm users can benefit from your due diligence. Great for capturing new ideas, thoughts and meeting notes or even a quick phone number or address as you finish up a call in the car.

PrintBoy Deluxe leverages the power of our industry-standard Bachmann Print Manager to create lightning-fast, formatted output against almost any printer. Simply point your Palm at your printer's infrared port (serial port connectivity is also supported), load the PrintBoy plug-in of your choice, and tap "print" – your information will be perfectly formatted and immediately printed on readable, full-size paper.

PrintBoy Deluxe does not need a personal computer to print. Instead, PrintBoy comes with special print drivers that enable your Palm™ compatible handheld device to print directly to virtually any printer.

1.2. What's New in PrintBoy Deluxe

This section describes improved features added for version 2.0.

1.2.1. Expanded Applets and Functionality

With PrintBoy Deluxe, you can now print new types of information from your Palm via new plug-in applets:

- **Spreadsheets**
 - Supports the popular Quicksheet format
 - Familiar row-column printouts
 - Landscape and portrait orientation
 - Optional gridlines
 - Best-fit column alignment
 - Print a single sheet, multiple or all sheets from a single workbook
- **PrintBoy Documents Wordsmith compatibility**

1.2.2. The PrintBoy Shell

All PrintBoy-compatible applications install and are accessible from the single “Shell” application that lets you see at a glance all the different Palm information types that can be printed by PrintBoy plug-ins. You can then quickly tap on the plug-in for that type, and print your data. Through the PrintBoy shell’s plug-in interface, new plug-ins that use Bachmann Print Manager will be automatically registered and become available in the main screen.

The PrintBoy shell eliminates the need to have a separate application icon for each PrintBoy plug-in applet. What’s more, the PrintBoy shell puts the Bachmann Print Manager Configuration program (BPMConfig) one convenient tap away.

1.2.3. Powered by Bachmann Print Manager

PrintBoy Deluxe comes with a run-time version of the Bachmann Print Manager graphical print engine, which provides standard printing services on all Palm Computing Platform devices. Print Manager includes our easy to use Print Manager Config (BPMConfig) utility, which allows you to maintain settings for each printer that you wish to send output to.

2.0 Getting Started with PrintBoy Deluxe

2.1 Pre-Installation Checklist:

If you have a Palm Pilot, Handspring Visor, TRGPro, IBM Workpad, Symbol SPT product or any other PDA that uses the **Palm OS operating system version 3.0 or higher**, you can use PrintBoy.

To install and use PrintBoy Deluxe you need the following:

- A Palm Pilot or compatible using Palm OS 3.0 or above
- A Personal Computer, Hotsync cradle and any unzip software (for example, WinZip or Pkzip) – to download PrintBoy Deluxe onto your PDA
- A Printer with any of the following:
 - A built-in infrared (IR) port on your printer
 - An IRDA printer adapter from Actisys - You can purchase on-line at www.actisys.com. Actisys's product number is ACT-IR100M and the current price of this product is \$99.00 (at the time this publication was created).
 - An IRDA Printer adapter from Extended Systems – You can purchase on-line at www.extendsys.com. Extended Systems product number is ESI-9580C and the current price to purchase on-line is \$161.10 (at the time this publication was created)
 - A serial to parallel cable – Greenwich Instruments – GA945PP – This allows you to print at speeds up to 57.6K BPS. You can purchase on-line from www.igo.com - Igo's product number is 31696 and the price of this product is \$69.00 (This product only works with Palm devices that use the original serial connection, for example Palm III and Palm VI.)
 - A serial cradle (either the Handspring or Palm) and the Greenwich Instruments cable GA935CE9M – This allows you to print at 9600BPS. You learn more about this product from www.greenwichinst.com.

2.2 Installing PrintBoy Deluxe:

PrintBoy Deluxe comes with a large number of PrintBoy programs and components. Most users install all of the programs, giving them the full suite of PrintBoy applications, as follows:

Step 1: Run the Palm Install tool

Step 2: Locate the folder where you unzipped the program files and documentation.

Step 3: Add the following files to the Palm Install Tool: (* **see note below if you currently have a registered copy of PrintBoy 2.0**)

- PBAddress.prc
- PBDate.prc
- PBClip.prc
- PBMail.prc
- PBMemo.prc
- PBShell.prc
- PBToDo.prc
- PBDoc.prc
- PBNote.prc
- PBScribble.prc
- PBSpread.prc
- PBQsDr.prc

- PrintMgr.prc

- PageMgr.prc
- IrMgr.prc
- BPMConfig.prc
- BPM_CourierNew10.pdb

Step 4: Perform a HotSync. This will copy all the necessary files onto your Palm.

That's it! PrintBoy Deluxe and the Print Manager system are now installed on your Palm. If you tap on the Applications icon, Main icon or Unfiled icon, you should see the PrintBoy Shell application in the Launcher on your main Palm screen, as shown below:



*Note – If you currently have a registered version of PrintBoy 2.x, do not install the following:

- PBAddress.prc
- PBDate.prc
- PBClip.prc
- PBMail.prc
- PBToDo.prc
- PBMemo.prc

You would overlay your registered version with a demo version.

3. Configuring Your Printer

Once PrintBoy Deluxe has been successfully installed, you need to choose your default printer. PrintBoy Deluxe comes with a Print Manager Configuration application that runs on the Palm, which is called “BPMConfig”.

BPMConfig (shown below) allows you to:

1. Choose your default printer
2. Configure your printer’s communications and other settings



3.1. Choosing Your Default Printer

Choosing your default printer saves you time, so that you won’t have to setup your printer every time you want to print. PrintBoy Deluxe allows you to choose a default printer that it will automatically use for each print job.

Perform the following steps to select your default printer.

- Run PrintBoy from your Palm application launcher
- Tap on the “Setup” button, located at the bottom right corner of the main PrintBoy screen
- Tap on the “Driver Name” drop-down list to see a list of all available printer drivers (see “Choosing a Printer Driver” below)
- Tap on the driver that most closely describes your printer
- Tap on the “Set as Default” button to set that driver as the default one to use with PrintBoy

Note that you can change your driver selection at any time by simply tapping on Setup from the main PrintBoy screen.

3.2. Choosing a Printer Driver

Because PrintBoy is powered by Bachmann Print Manager, you can print from your Palm to almost any desktop, networked or mobile printer. PrintBoy comes with many special print drivers to help your Palm create the best output possible for your printer. All of the PrintBoy plug-in applets will work with any of the printer drivers, so you will be able to print the same information no matter which printer you have.

However, some printer drivers have been enhanced to support fully graphical output, enabling PrintBoy to render rich formatted pages.

To help you select the best driver for your printer, you should consult the Appendix A: Printer Compatibility Matrix, located at the end of this manual. Find your printer in the list, and note the recommended Bachmann Print Manager driver.

- **Important! Which printer you own, and which printer driver you select, will determine how well PrintBoy works. It will also determine whether PrintBoy gives you fully graphical output or plain text output. (See Appendix A)**

You should also consult the user guide that came with your printer and see if it talks about compatibility with other printers. For example, many printers support (or “emulate”) Hewlett-Packard’s “Printer Control Language” (also known as PCL). If this is the case, you can try to use either the LaserJet or the DeskJet driver.

If your printer is not listed in the Compatibility Matrix, and your printer manual does not describe any emulation for a printer that is in the Matrix, you will almost certainly be able to achieve basic printing by choosing the “Generic” printer driver.

3.3. Verifying Printer Settings

The PrintBoy printer drivers come pre-configured with the most likely communications settings. Depending on your driver and your intended printing connectivity (infrared or serial), you may need to adjust these settings.

The Bachmann Print Manager Configuration application (BPMConfig) makes changing these settings easy and consistent for all printer drivers. Just follow these steps:

- Run PrintBoy from your Palm application launcher
- Tap on the “Setup” button, located at the bottom right corner of the main PrintBoy screen
- If your driver is not already displayed, tap on the “Driver Name” drop-down list to see a list of all available printer drivers (see “Choosing a Printer Driver” above), and tap on the driver you wish to configure.
- Tap on the “Edit” button
- Set the communications speed to meet your printer’s specifications. The defaults provided should work fine with most printers, but if you run into difficulties communicating with the printer you may need to change the speed. See Appendix A “Printer Compatibility” for details.
- Set the technology to either “IrDA” or “Serial”.
- Tap OK
- If you are using the Greenwich Instrument serial cable – GA945PP, you would need to set the Flow Control to “none”.
- Tap OK at the main BPMConfig screen to return to PrintBoy’s main screen.

4. Removing PrintBoy Deluxe

If for some reason you wish to remove PrintBoy Deluxe from your Palm device, you will need to perform the following steps:

Step 1: Tap on the Applications icon, then tap on the Menu icon and choose App | Delete.

Step 2: Find each of the following files and delete them from your Palm:

- PBAddress.prc
- PBClip.prc
- PBDate.prc
- PBMail.prc
- PBMemo.prc
- PBToDo.prc
- PBDoc.prc
- PBNote.prc
- PBScribble.prc
- PBSpread.prc
- PBQsDr.prc

- PrintMgr.prc
- PageMgr.prc
- IrMgr.prc
- BPMConfig.prc
- BPM_CourierNew10.pdb

At this point, PrintBoy Deluxe is no longer on your Palm device. You can reinstall it by simply re-running the installation procedure (see section 2).

5. Printing from PrintBoy Deluxe

This section describes the PrintBoy shell application, as well as the individual PrintBoy plug-in applications.

5.1. The PrintBoy Shell Application

The PrintBoy Shell application (shown below) is a “launcher” for the various PrintBoy plug-ins, as well as for the Bachmann Print Manager Configuration program (BPMConfig).



The main screen consists of:

- A list of installed PrintBoy Plug-Ins
- A Setup button for launching the BPMConfig utility

Each Plug-In listed on the main screen represents a kind of information you can print. Tapping on the description for a plug-in will launch the plug-in applet. For example, tapping on the Appointments description will launch PrintBoy:DateBook, which lets you print your DateBook appointments in a variety of formats.

5.2. PrintBoy/Address

PrintBoy/Address (shown below) is launched by tapping on Addresses from the main PrintBoy screen. PrintBoy/Address lets you print any address from your Palm's Address List.



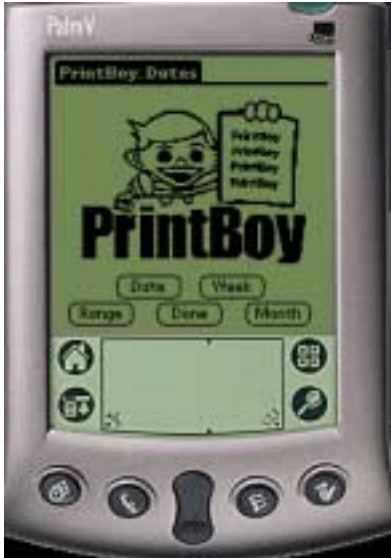
The PrintBoy/Address screen lists all of your Palm addresses by category, just like the built-in Address List application. Use the category dropdown list in the upper right corner of the screen, along with the vertical scrolling feature, to locate the address you wish to print. As an alternative, you can use the Find feature to jump to the address by entering the first few letters in Graffiti.

Once you've found the address, simply tap on it to select it, then tap the Print button.

Note that PrintBoy will also work with **any** 3rd party Address List enhancement such as Action Names or Address Pro, since those applications continue to use the standard Palm Address database.

5.3. PrintBoy/DateBook

PrintBoy/DateBook (shown below) is launched by tapping on Appointments from the main PrintBoy screen. PrintBoy/DateBook lets you view your scheduled appointments and events for a single day, multiple days, a week at a time, or in the familiar “month at a glance” monthly calendar format.



The PrintBoy/DateBook screen lets you choose from four buttons that control how your appointments will be printed out.

“Date”: Lets you choose a single date (the default is “today”) for which to print your appointments.

“Range”: Lets you choose a start date and end date. Your appointments are printed for each day in the range

“Week” Lets you choose a week (the default is the current week) for which to print your appointments. Your appointments are printed for each day in the week.

“Month” Lets you choose a month (the default is the current month) for which to print your appointments.

Note: If your configured print driver supports enhanced graphics, (currently supported for the HP LaserJet and Compatibles, HP DeskJet and Compatibles, O’Neil Microflash, as well as the Pentax PocketJet 200), PrintBoy will print a graphical “Month at a glance” month calendar. If your configured print driver does not support enhanced graphics, your appointments will be printed as a range of days, just the same as if you had chosen “Range” or “Week”.

After you have completed a printout, you may continue to choose more printouts. Tapping the Done button returns you to the PrintBoy Shell.

Note that PrintBoy will also work with **any** 3rd party Datebook enhancement such as DateBk4, since those applications continue to use the standard Palm DateBook database.

5.4. PrintBoy/To Do

PrintBoy/To Do, (shown below) is launched by tapping “To Do’s” from the PrintBoy Shell. PrintBoy/To Do lets you print your To Do’s from the built in Palm To Do List. PrintBoy will automatically sort your printout by priority and due date, and even include a handy “check box” in the left hand column so you can check tasks as completed as you work through your day.



You can choose how to print your to do’s by selecting a category from the top right corner of the screen. These are the same categories found in the Palm To Do list application. If you select the “All” category, all of your to do’s will be printed. Selecting a different category will print only to do’s that have been stored in that category.

When you have selected your category, simply tap the Print button. Your To Do’s are printed sorted by ascending priority, and descending due date within each priority. If a To Do has an associated Note, the note is automatically printed along with the To Do.

You may print several categories in succession if you choose. When you are done printing, tap the Done button to return to the PrintBoy shell.

5.5. PrintBoy/Memo

PrintBoy/To Do, (shown below) is launched by tapping “Memos” from the PrintBoy Shell. PrintBoy/Memo lets you print any single Memo stored by the built in Palm Memo application. Use PrintBoy/Memo to print meeting notes, driving directions, important ideas, shopping lists and more!



The PrintBoy/Memo screen lists all of your Palm memos by category, just like the built-in Memo application. Use the category dropdown list in the upper right corner of the screen, along with the vertical scrolling feature, to locate the memo you wish to print.

Once you’ve found the memo, simply tap on it to select it, then tap the Print button.

You can print several memos in succession if you choose. Simply tap the Done button to return to the PrintBoy shell.

5.6. PrintBoy/Mail

PrintBoy/Mail lets you print any e-mail created by the built in Palm Mail application. Use PrintBoy/Mail to print drafts, incoming mail, or sent mail.



Select the mail you wish to print by first choosing the folder, then scrolling down the list and tapping on the e-mail to be printed. Tap on the “Print” button to print the mail.

5.7. PrintBoy/Clipboard

PrintBoy/Clipboard may appear simple, but in fact is the most versatile of all the PrintBoy plug-ins. It can print information from any Palm application that supports copying data to the standard Palm Clipboard. This includes web browsers, e-mail software, document readers, databases, and more. For example, on the Palm VII™ Organizer, you can copy wireless web clippings from the Internet to the clipboard, switch to PrintBoy Clipboard, and print out your web page in a matter of seconds.

The Clipboard is a kind of temporary space where information may be exchanged between applications. For example, you can copy part of a memo and paste it into another new memo. Or you can copy an address book entry into a memo. Not only that, but most 3rd party applications also support the clipboard, meaning that you can copy web content, e-mail, documents, expense data, and more to the Palm clipboard.

PrintBoy can take any text that is copied to the clipboard, and print it out just like a memo.

PrintBoy/Clipboard is different than the other PrintBoy applets in that you should first run your target application, and copy your target data to the Palm clipboard. Then run PrintBoy/Clipboard from the PrintBoy shell by tapping on the “clipboard” item.

Tap on the “Print” button, and your information will be printed.

5.8. PrintBoy/Documents

PrintBoy Documents is a Palm software application that enables you to print documents that you have stored on your Palm™ Organizer directly to your printer through either an infrared or serial connection.

PrintBoy is compatible with most Document programs for the Palm, including any program that supports the standard Doc format, as well as the enhanced Wordsmith file format in use by Blue Nomad's popular Wordsmith program. A large number of converters, editors and readers have been released by various vendors, all of which support the Doc format.

The Doc format has become a standard for storage of text-based content on Palm devices. A large number of converters, editors and readers have been released by various vendors, all of which support the Doc format.

Converters are programs that run on the host (Windows or Mac). They transform files of various formats (Text, HTML, Word, RTF, PDF, etc) into PDB files that are in the Doc format, and in many cases add the PDB files to the Palm Install Tool for the next HotSync.

Readers are Palm applications that can display (but not necessarily edit) PDB files that are in the standard Doc format. Typically these programs provide very basic navigation and formatting features.

Editors are Palm applications that can edit, and even create, Doc formatted files on the Palm. Many of these applications add "extensions" to the Doc format to support enhanced features such as text effects, formatting, etc.

PrintBoy Documents is the first standalone commercial software product that allows Palm users to print their documents directly from their handheld devices to virtually any printer. When combined with a capable Converter program, PrintBoy Documents supports printing of Text, HTML, Word, RTF, and PDF files stored on the Palm.

PrintBoy Documents leverages the power of our industry-standard Bachmann Print Manager to create lightning-fast, formatted output against almost any printer. Simply point your Palm at your printer's infrared port (serial port connectivity is also supported), load the PrintBoy for Documents plug-in of your choice, and tap "print" – your information will be perfectly formatted and immediately printed on readable, full-size paper.

PrintBoy Documents does not use a personal computer to print. Instead, PrintBoy Documents comes with special print drivers that enable your Palm™ compatible handheld device to print **directly** to virtually any printer.

PrintBoy for Documents installs and runs as a completely separate Palm program from whatever doc readers are in use by the customer. It is not dependent at all on the presence of a Doc reader or editor, and in fact will work with any Doc converter that conforms to the Doc standard format.

PrintBoy for Documents plugs into the standard PrintBoy "shell" so that if a customer owns other PrintBoy plug-ins they will all appear in the same list of plug-ins.

To print a document, the user runs PrintBoy, and taps on the Documents plug-in to launch PrintBoy for Documents. If the user has any files that are in Doc format, they are listed on the screen. The user selects the Doc file they wish to print, establishes connectivity to the printer, and then taps the Print button. The document is then printed.

How to Print

The main screen of PrintBoy Documents consists of

- A multi-column display panel known as the **File List**
- A set of printing options
- Several command buttons.

The File List

The File List presents a list of documents that you have stored on your Palm device. If no documents are found, the list is empty.

The columns in the File List show you your document Name, Date, Size and Type. The Name column lists what your document was named when it was converted by the program that transferred it to your Palm device (see Converters). The Date column lists the date stamp for the document when it was stored on your Palm device, or the last updated date if you are using a Doc Editor program. The Size column indicates the size of your document in bytes (rounded down to the nearest 1K bytes). The Type column indicates whether your document is stored in the standard Doc format or is stored in the enhanced Wordsmith format.

By default the list is sorted alphabetically by Name. Tapping on any of the three column labels “Name”, “Date” or “Size” sorts the File List by that column in ascending order.

If more Doc files are available than can be displayed at one time, an up arrow and down arrow appear at the bottom right of the list. Tapping on these arrows causes the list to scroll by one page in either direction.

Printing Options

You can choose two settings that affect the printed output for any printer driver: Page Header and Page Numbers. These settings are not persistent from across print jobs and thus need to be set for every job.

- Page Header

If the checkbox for Page Header is set, a header will appear at the top of every page. The header should contain the File Name for the document as well as today’s date, formatted using the Palm’s long date format preference. If the checkbox is not set, there should be no header printed.

- Page Numbers

If the checkbox for Page Numbers is set, an incremented page number will be printed at the bottom of every page. If the checkbox is not set, there should be no page number printed.

Command Buttons

Two command buttons appear at the bottom of the Documents screen: Print and Done. Tapping on Print will print the currently selected document from the File List. Tapping Done will return you to the main PrintBoy shell program.

Printing a Document

Printing is performed by tapping on a document to select it, then tapping the Print button. If the user has not selected a document, a message “Please select a document to print” will appear.

While printing, a progress interface will appear that counts the number of pages sent to the printer. When all pages are sent successfully the progress interface closes.

PrintBoy Documents will attempt to print against any printer driver that is chosen by the user in the Setup (BPMConfig) utility. The format and quality of the printed output will vary based on the Print Manager printer driver chosen. Some of the most popular Print Manager drivers, including HP Laserjet and Deskjet drivers and the Ricoh driver, are capable of rich graphical output and will print a graphical banner across the top of the page. Other printers will at minimum output the document using plain text.

PrintBoy Documents printout will always contain **the entire document** no matter how long (there are currently no set limits in PrintBoy for the maximum document length). Note that for Doc readers that support the clipboard, customers can select a small section of text, copy it to the clipboard, then use PrintBoy Clipboard to print it.

5.9. PrintBoy Spreadsheet

PrintBoy Spreadsheet is a Palm software application that enables you to print spreadsheets that you have created and stored on your PalmTM Organizer, using the popular QuickSheet program from Cutting Edge Software. PrintBoy Spreadsheet lets you print these spreadsheet files directly to your printer through either an infrared or serial connection, in a format that is very similar to what you would expect if you printed a spreadsheet from your PC. PrintBoy Spreadsheet is in fact the first standalone commercial software product that allows Palm users to print their spreadsheets directly from their handheld devices to virtually any printer.

PrintBoy Spreadsheets: *Quicksheet Edition* works with any spreadsheet produced within the Quicksheet application from Cutting Edge Software (Quickoffice, which includes Quicksheet, is also supported). Formatting includes labeled headings, portrait/landscape layout, grid lines, and print to fit cells.

- **PrintBoy Spreadsheets is the very first stand-alone commercial software product to allow users to print spreadsheets directly from their handhelds. Working seamlessly with Cutting Edge Software's Quicksheet and Quickoffice applications, PrintBoy Spreadsheets offers the first opportunity to produce hard copy spreadsheets when are not sitting at your desktop computer.**

PrintBoy Spreadsheet leverages the power of our industry-standard Bachmann Print Manager to create lightning-fast, formatted output against almost any printer. Simply point your Palm at your printer's infrared port (serial port connectivity is also supported), load the PrintBoy Spreadsheet plug-in of your choice, and tap "print" – your information will be perfectly formatted and immediately printed on readable, full-size paper.

PrintBoy Spreadsheet does not use a personal computer to print. Instead, PrintBoy Spreadsheet comes with special print drivers that enable your PalmTM compatible handheld device to print **directly** to virtually any printer.

Like the other printing applications in the PrintBoy family, PrintBoy Spreadsheet into the standard PrintBoy "shell" so that if a customer owns other PrintBoy plug-ins they will all appear in the same list of plug-ins.

To print a spreadsheet, the user runs PrintBoy, and taps on the Spreadsheets plug-in to launch PrintBoy Spreadsheet. If the user has any files stored in Quicksheet format, they are listed on the screen. The user selects the spreadsheet they wish to print, establishes connectivity to the printer, and then taps the Print button. The spreadsheet is then printed.

How To Print

The main screen of PrintBoy Spreadsheet consists of

- A 3-column display panel known as the **File List**
- A set of printing options
- Several command buttons.

The File List

The File List presents a list of spreadsheets that you have stored on your Palm device. If no spreadsheets are found, the list is empty.

There are three columns in the File List: Name, Date and Size. The Name column lists what your spreadsheet was named when it was converted by the program that transferred it to your Palm device. The

Date column lists the date stamp for the spreadsheet when it was stored on your Palm device, or the last updated date from QuickSheet. The Size column indicates the size of your spreadsheet in bytes (rounded down to the nearest 1K bytes).

By default the list is sorted alphabetically by Name. Tapping on any of the three column labels “Name”, “Date” or “Size” sorts the File List by that column in ascending order.

If more Spreadsheet files are available than can be displayed at one time, an up arrow and down arrow appear at the bottom right of the list. Tapping on these arrows causes the list to scroll by one page in either direction.

To select a spreadsheet file for printing, tap once on the file, then tap the “Select” button.

Printing Options

- Sheet To Print

Choose the sheet(s) within your spreadsheet workbook that you wish to print. You can choose as many as you would like by tapping on the square checkbox in the left-most column. You can quickly select all sheets or none by using the “Check All” or “Clear All” buttons on the right.

If there are more sheets than can be seen on a single screen, the scroll arrows on the right will scroll through the sheets.

- Draw Grid

Allows you to turn grid line printing on or off. This setting is off by default.

- Landscape

When checked, prints the spreadsheet in landscape orientation. The default is portrait orientation.

Command Buttons

Two command buttons appear at the bottom of the Spreadsheets screen: Print and Done. Tapping on Print will print the currently selected spreadsheet according to the Print Options specified. Tapping Done will return you to the main PrintBoy shell program.

Printing a Spreadsheet

Printing is performed by tapping on a spreadsheet to select it, then tapping the Select button. If the user has not selected a file, a message “Please select a file to print” will appear. At the next screen, tap Print.

While printing, a progress interface will appear that counts the number of cells read and sent to the printer. When all pages are sent successfully the progress interface closes.

PrintBoy Spreadsheet will attempt to print against any printer driver that is chosen by the user in the Setup (BPMConfig) utility. The format and quality of the printed output will vary based on the Print Manager printer driver chosen. Some of the most popular Print Manager drivers, including HP Laserjet, Deskjet driver and the Ricoh driver, are capable of rich graphical output and will print a graphical banner across the top of the page. Other printers will at minimum output the document using plain text. In all cases, the printed output will be column aligned, just as you would expect from a spreadsheet printout.

Important: PrintBoy Spreadsheet will print the **last saved** version of your spreadsheet. If you've made recent changes in your spreadsheet, please make sure you have saved the file before attempting to print it, or your recent changes will not be printed.

5.10. PrintBoy/Note

PrintBoy/Note enables you to take a text only note by using the Graffiti Palm Language or the keyboard. You can now print to paper or wait until later. Your text note is saved until you choose to create another text only note.

To Launch PrintBoy/Note tap on “Note” from the PrintBoy Shell.

This will bring us a blank text notepad for you to take a note. When you are finished taking your note you can or print it or it will stay in memory until you create a new text note.

5.11. PrintBoy/Scribble

PrintBoy/Scribble enables you to take a note by scribbling on your Palm™ Organizer. You can now print it to paper or wait until later. Your scribble note is saved until you choose to create another scribble note.

To Launch PrintBoy/Scribble tap on “Scribble” from the PrintBoy Shell.

This will bring us a blank scribble notepad for you to take a note. When you are finished taking your note you can or print it or it will stay in memory until you create a new scribble note.

Appendix A: Printer Compatibility Matrix

Use the following matrix to determine the best Bachmann Print driver to use with your printer.

Manufacturer	Model	PrintBoy Output	Communications	Print Manager Driver
HP	All LaserJet models beginning with LaserJet II, as well as compatibles running PCL3 or greater.	Full Graphics	Infrared, Serial	HP LaserJet and compatibles
HP	All HP DeskJet's running PCL 3, including DeskJet 340, DeskJet 350, 890, 895, all newer models and other DeskJet compatibles running PCL3	Full Graphics	Infrared, Serial	HP DeskJet and compatibles
Canon	BJC-50	Formatted Text	Infrared, Serial	Canon
Canon	BJC-80	Formatted Text	Infrared, Serial	Canon
Pentax Technologies	PocketJet 200	Full Graphics	Serial	PocketJet
Seiko	DPU 3445	Formatted Text	Infrared, Serial	Generic
Citizen	PN-60I	Formatted Text	Infrared, Serial	Generic
O'Neil	Microflash series	Full Graphics	Infrared, Serial	Oneil
Paxar/Monarch	6015	Formatted Text	Serial	Generic
Epson		Formatted Text/Full Graphics	Infrared, Serial	HP DeskJet, HP LaserJet or Epson driver
Ricoh		Full Graphics	Infrared, Serial	Ricoh
Lexmark		Formatted Text/Full Graphics	Infrared, Serial	Generic, HP DeskJet, or HP LaserJet

Appendix B: Frequently Asked Questions (FAQ's)

Q: WHAT IF I DO NOT HAVE AN IR PRINTER? CAN I STILL USE PRINTBOY?

A: If you do not have an IR printer, we would recommend that you upgrade your printer with an IRDA adapter port, we have tested the following –

- An IRDA printer adapter from Actisys - You can purchase on-line at www.actisys.com. Actisys's product number is ACT-IR100M and the price of this product is \$99.00

-An IRDA Printer adapter from Extended Systems – You can purchase on-line at www.extendsys.com. Extended Systems product number is ESI-9580C and the price to purchase on-line is \$161.10

If you prefer a serial connection, we have tested the following:

- A serial to parallel cable – Greenwich Instruments – GA945PP – This allows you to print at speeds up to 57.6K BPS. This cable does not work with the Handspring or the Palm V. You need a PDA with a serial port similar to the Palm III or VII. You can purchase on-line from www.igo.com - Igo's product number is 31696 and the price of this product is \$69.00

- A serial cradle (either the Handspring serial or regular Palm) and the Greenwich Instruments cable GA935CE9M – This allows you to print at 9600BPS. You can learn more about this product from www.greenwichinst.com.

Q: I HAVE THE TRIAL VERSION OF YOUR SOFTWARE AND HAVE JUST PURCHASED THE REGISTERED COPY. WHAT SHOULD I DO TO LOAD THE NEW VERSION?

A: You need to delete the trial version before you load the registered version.

Q: HOW DO YOU GET GRAPHICAL OUTPUT FROM PRINTBOY?

A: Currently the graphical drivers are: HP LaserJet and compatible, HP DeskJet and compatible, Pentax PocketJet and the O'Neil

All other drivers will print attractive formatted text output.

Q: CAN PRINTBOY PRINT FOREIGN LANGUAGE TEXT?

A: PrintBoy Currently supports the standard Palm ASCII character set. Future releases of PrintBoy and Print Manager will have foreign language and extended character mapping support.

Q: CAN I USE PRINTBOY TO PRINT E-MAIL THROUGH OTHER SOFTWARE, FOR EXAMPLE MULTI-MAIL?

A: PrintBoy will not print an e-mail from Multimap, however, Multimap version 3.1 comes bundled with our PrintManager software so you can print an e-mail as part of the Multimap software.

Q: CAN I PRINT DOCUMENTS-TO-GO OR TEXT FILES?

A: Since PrintBoy Deluxe comes with PrintBoy Documents, as long as your documents to go files are saved in the doc format, not DataViz' proprietary format, you can print any documents.

.

Q: WILL THIS PROGRAM INTEGRATE WITH PRODUCTS LIKE PEDIT 4.05?

A: PrintBoy will successfully print data copied from any clipboard compatible application, which presumably includes pedit. We have plans later this year to introduce further data types that can be printed from PrintBoy.

Q: THERE ARE NO SCROLL ARROWS ON THE SCREEN THAT SHOWS THE MEMO TITLES. I AM HAVING TROUBLE FIGURING OUT HOW TO THE END OF MY MEMO LIST.

A: Please use the scroll bar on the PDA to view the rest of your memo titles.

Q: CAN I SELECT ONLY CERTAIN CATEGORIES IN MY APPOINTMENT BOOK TO PRINT?

A: Currently you cannot select certain categories to print appointments. We will be looking at that in future releases.

Q: CAN I PRINT MULTIPLE ADDRESSES FROM MY ADDRESS BOOK?

A: The intent of PrintBoy:Address is to print one address from the address book at a time. We may add printing multiple addresses in future releases.

Q: AM I ABLE TO ADJUST THE MARGINS ON MY PRINTOUTS?

A: At this time you are not able to adjust the margins.

Q: CAN I USE SIZE A4 PAPER?

A: Our software only supports the standard (letter sized) 8.5" X 11" paper.

Q: WHAT FONTS ARE CURRENTLY SUPPORTED ?

A: Courier and Times Roman

Q: I AM TESTING PRINTBOY WITH MY PALM VX AND MY APPLE LASER WRITER II PRINTER. I CANNOT SEEM TO FIGURE OUT WHICH PRINTER DRIVER TO USE OR WHAT SPEED.

A: See Compatibility Matrix in Appendix "B". If the printer is not listed try the generic driver at 9600bps speed.

Q: I HAVE PRINTBOY AND JUST SET UP A NEW CANON BJC-50, WHY CAN'T I PRINT GRAPHICS (LINES)?

A: Unfortunately, at this time we do not have the graphics driver for the Canon BJC printers. It is on our development team's list for future releases. It will only print text for you at this time.

Q: I OFTEN USE AN EXTERNAL PROGRAM INSTEAD OF THE BUILT-IN PALM APPLICATIONS. WHAT OTHER SOFTWARE IS PRINTBOY COMPATIBLE?

For Printing Addresses : PrintBoy will also work with any 3rd party Address List enhancement such as Action Names or Address Pro, since those applications continue to use the standard Palm Address database.

For Printing Appointments: PrintBoy will also work with any 3rd party Datebook enhancement such as DateBk4, since those applications continue to use the standard Palm DateBook database

For Printing Documents: PrintBoy Documents will work with any document reader/converter that stores documents on the Palm in the “Doc” format (Like Documents to Go, Aportis, SmartDoc, Iambic Reader, Teal Doc, etc.)

Q: I'M LOOKING FOR A FUNCTION THAT WILL ALLOW ME TO PRINT LABELS FROM MY PALM ADDRESS BOOK OR DESK TOP. DOES YOUR APPLICATION DO THIS?

A: We do not support address labels at this time.

Q: WHAT IS THE TECHNICAL FEASIBILITY OF PRINTING TO THE GAMEBOY PRINTER FROM THE PALM.

A: We do not have a GameBoy driver at this time.

Q: ANY PLANS TO CREATE HACKS FROM PRINTBOY INTO ANY 3RD PARTY APPLICATIONS?

A: Yes, future products will print other applications data.

Q: HOW DO I CHOOSE TO PRINT IR?

A: If your printer has an IR port on it, then run PrintBoy setup, select your printer, hit “edit”, and choose “IRDA” instead of serial. Set this as your default printer and now you can print via IR.

Q: I AM HAVING TROUBLE PRINTING FROM THE GREENWICH CABLE GA945PP?

A: Make sure that you set the Flow Control to “none”.

Q: HOW MUCH MEMORY DOES PRINTBOY USE ON THE PALM?

A: 220K Memory

Q: WHY DO I HAVE A “POWERED BY BACHMANN” BANNER ON MY PRINTOUTS?

A: If you are using the trial version of PrintBoy this will always appear, however if you have purchased the “real” version of PrintBoy the problem lies in that the demo version has not been completely removed before installing the “real” version. To correct, delete that demo version and make sure you are installing all the files. If necessary, delete all the files especially prtmanager.prc and page manager.prc and start again.

Also, this may occur if you have the trial version of Print Manager on your Palm while using PrintBoy. To correct please delete the demo version of Print Manager.

Q: CAN I USE MY PALM CRADLE TO PRINT USING PRINTBOY?

A: PrintBoy works by sending a formatted print job directly from your palm to the printer, and does not

make use of or require a PC connection. For infrared printers, you simply point your Palm's infrared port at the printer's infrared port, within a distance range of 1 to 3 feet.

Q: I AM GOING TO PURCHASE A SERIAL CABLE – THE GREENWICH CABLE COST APPROXIMATELY \$70 BUT COMPUSA SELL OTHER SERIAL TO PARALLEL CABLES FOR ABOUT \$15 – WHY MUST I USE THE MORE EXPENSIVE. IF ALL THE CABLE DOES IS CONVERT A SERIAL CONNECTION TO A PARALLEL CONNECTION, COULD I NOT SIMPLY PLUG MY PALM CRADLE INTO MY PRINTER CABLE AND PRINT THAT WAY?

A: The reason for the difference in price from \$70.00 to \$15.00 is the way the cables transfer data. In order for a Palm device to transfer information to a peripheral device, you need to match their communication speeds (more commonly called baud rates). The \$70 cable is an 'active' connecting device which is powered to transfer data at 57600 bps (bytes per second). This enables the Palm device to communicate with the printer at the proper communication speed. The \$15 cable is a 'passive' connecting device, which does not help to match the communication speeds of the Palm device and the printer.

Q: CAN I BEAM PRINTBOY TO MY OTHER PALM ?

A: We have disabled beaming of the application and its components. Part of the reason for this is that there are many individual components and for PrintBoy, and we felt it would be problematic for users who accidentally omitted a component. To get the software on a palm device you need to hot synch down the software as described in the user manual.

Q: CAN I PRINT TO MY PRINTER THAT IS ATTACHED TO MY PC?

A: Yes, but only by printing using the printer's infrared port, or by attaching a serial to parallel cable to the printer from the Palm. You can share your printer between your PC and your Palm by obtaining an "a-b" switch box that supports two simultaneous cable connections to your printer.

Q: CAN PRINTBOY PRINT TO A NETWORK PRINTER?

A: PrintBoy allows you to print directly from your Palm to your printer, using either infrared or serial connection between the palm device and the printer. If your network printer has an IR port and the printer was set up to acknowledge that port, you should be able to print.

ERROR MESSAGES

Q. WHAT DO I DO IF I RECEIVE A MESSAGE “UNABLE TO FIND APPLICATION INFORMATION ON SERVER”? HOTSYNCH INDICATES THAT THERE IS AN APPLICATION ERROR. HOW DO WE GET AROUND THIS?

A: We recommend a “soft reset” in order to fix the problem.

Q: I AM EXPERIENCING AN ERROR WHEN I PRINT "ERROR 15 OPENING PAGE MANAGER". CAN YOU TELL ME WHAT THIS IS AND HOW TO FIX IT?

A: Error 15 can be a the result of a few problems:

1. The software is looking for an IR port on your printer. Make sure your printer has an IR port or add on IRDA adapter, like the Actisys M-100.
2. You are not pointing the Palm's IR port correctly at the printer's IR port

3. You are using the wrong driver for your printer
4. The communications speed settings for your printer are not set correctly.
For #3 or #4, tap the setup button on the PrintBoy main screen, and verify that you have selected the correct printer and driver settings.

Q: WHEN ATTEMPTING TO PRINT VIA IR “ERROR 25 OPENING PAGE MANAGER” MESSAGE APPEARS.

A: Your printer may not have an IR port

Q: I DOWNLOADED AND INSTALLED PRINTBOY. ANY TIME I TAP ON ANY OF THE "PRINT" BUTTONS OF THE PRINTBOY APPS, I GET THE FOLLOWING MESSAGE: MEMORYMGRNEW.C, LINE: 4232, NIL PTR

A: The error is due to a missing prc file in the installation. Please verify you have installed:

printmgr.prc
pagemgr.prc
irmgr.prc
bpmconfig.prc
bpm_couriernew10.pdb

Also please verify that you have run setup, chosen a printer driver, and set the driver as the default. PrintBoy installs with the generic driver set at serial, so you'll need to change that to fit your printer.