



User Guide

Version 1.1



www.PocketLingo.com



© 2003 HLCSOFT, LLC All Rights Reserved
This program is protected under US and International copyright law.

Notice of Copyright

PocketLingo ESL: The American Heritage® Dictionary for Learners of English

www.PocketLingo.com

© 2002-2003 HLCSOFT, LLC.

www.Pocketlingo.com

All Rights Reserved

This program is protected under US and International copyright law.

The American Heritage ® Dictionary for Learners of English Copyright © 2002, 1998 by Houghton Mifflin company. Published by Houghton Mifflin Company. No part of this database may be reproduced or otherwise used without prior written permission from the publisher unless such use is expressly permitted by applicable law.

No investigation has been made of common-law trademark rights in any word. Words that are known to have current trademark registrations are shown with an initial capital and are also identified as trademarks. The inclusion or exclusion of any word, or its capitalization, in this dictionary is not, however, an expression of the publisher's opinion as to whether or not it is subject to proprietary rights, nor is it to be regarded as affecting the validity of any trademark.

American Heritage® is a registered trademark of Forbes Inc. Its use is pursuant to a license agreement with Forbes Inc.

Version 1.0

October 2003

HLCSOFT Software License Agreement

IMPORTANT: PLEASE READ THE ENTIRE LICENSE AGREEMENT BEFORE USING THIS SOFTWARE.

This End-User License Agreement (the “Agreement”) is a legal agreement between you (“Licensee”), the end-user, HLCSOFT, LLC. (“HLC”) for the use of the PocketLingo software product (“Software”). By using this Software or any part of it, you are agreeing to be bound by the terms of this Agreement. If you do not agree to the terms of this Agreement please do not install this Software.

License and Distribution:

The evaluation copy of this Software is free of charge for an unlimited period of time and is fully functional except that it includes only a limited portion of the dictionary database.

In order to use the entire dictionary database, you must pay the license fee and register your copy of the Software.

You may use this program ONLY on one (1) SINGLE handheld device, together with the related desktop computer(s) used by you.

This program is owned by HLCSOFT, LLC., and is protected by U.S. and international copyright laws. No copying is permitted, except for one (1) back-up copy. No transfer, distribution, modification or translation of this program, electronic or otherwise, is permitted without HLCSOFT’s written permission. VIOLATION OF COPYRIGHT IS A SERIOUS OFFENSE, PUNISHABLE BY MONETARY PENALTIES AND POSSIBLE IMPRISONMENT.

Limitations of Use:

You may not, nor may you permit anyone else to de-compile, reverse engineer, disassemble, modify, or create derivative works based on the Software or the documentation in whole or in part. You may not use the Software to perform any unauthorized transfer of information (e.g., transfer of files in violation of a copyright) or for any illegal purpose.

No Warranties:

This software and any related documentation is provided “as is” without warranty of any kind. HLCSOFT, LLC. specifically disclaims all warranties, expressed or implied, including but not limited to implied warranties of fitness for any particular purpose and of merchantability.

Limitation of Liability:

In no event will HLCSOFT, LLC. be liable to you for any damages, including but not limited to any loss of data, lost profits, lost savings, commercial damage or other incidental or consequential damages arising out of the use or inability to use this program directly or indirectly, or for any claim by any other party.

Governing Law:

This Agreement shall be construed according to, and the rights of the parties shall be governed by, the law of the State of Massachusetts.

Contents

INTRODUCTION.....	5
WELCOME TO POCKETLINGO	5
HOW TO ORDER POCKETLINGO	5
SYSTEM REQUIREMENTS	5
INSTALLATION.....	5
INSTALLING POCKETLINGO USING A WINDOWS COMPUTER.....	5
INSTALLING POCKETLINGO ONTO AN EXTERNAL MEMORY CARD.....	6
UNINSTALLING POCKETLINGO.....	6
REGISTRATION.....	7
WHY REGISTER?	7
HOW TO REGISTER	7
WHERE TO FIND YOUR OWNER NAME	7
THE REGISTRATION CODE - WHAT, WHERE, AND HOW	8
USING POCKETLINGO.....	9
OVERVIEW	9
LOOKUP TAB.....	10
<i>Definition</i>	11
STUDY TAB	12
<i>Study Control</i>	12
MYWORD TAB.....	13
<i>MyWord Control</i>	14
TROUBLESHOOTING	15
CONTACTING US	16

Introduction

Welcome to PocketLingo

PocketLingo turns your PDA into a powerful dictionary and learning tool that will enrich your vocabulary effortlessly and quickly. Using one of America's most trusted dictionaries for over one hundred years, *The American Heritage® Dictionary for Learners of English*, PocketLingo gives you complete and up-to-date definitions. Learning a new word is simple; just tap on the word you want to look up. This software helps you expand your vocabulary by using proven learning methods, such as study cards and a customized word list.

How to Order PocketLingo

Visit our website at www.pocketlingo.com and download the version of PocketLingo that is right for you.

System Requirements

- Pocket PC 2002 or higher;
- 2.5 MB of available memory space (either on the device or on the external memory card).

Installation

Installing PocketLingo Using a Windows Computer

1. Download PocketLingoESL_Pocket_PC_v1_1.zip if necessary from http://www.pocketlingo.com/products/pocket_pc/PocketLingoESL_Pocket_PC_v1_1.zip on to your computer and extract the contents of the .zip file.
2. Run the ESL_Setup.exe file.

Installing PocketLingo onto an External Memory Card

HLCSOft recommends that you use the default Setup.exe installer to install all files to their default locations on your device if the space is available. Otherwise, follow the directions below to install the program onto an External Memory Card.

1. Download PocketLingoESL_Pocket_PC_v1_1.zip if necessary from http://www.pocketlingo.com/products/pocket_pc/PocketLingoESL_Pocket_PC_v1_1.zip on to your computer and extract the contents of the .zip file.
2. Make sure to have your memory card inserted in the device.
3. Run the ESL_Setup.exe file.
4. From the drop-down selection in the window that should appear, choose "Storage Card" instead of "Main Memory".
5. Click OK to continue the installation.

Uninstalling PocketLingo

1. From your Pocket PC device, tap the Start menu, and then tap Settings.
2. Tap the "System" tab to open the system property sheet, and tap the Memory icon.
3. Tap the Running Programs tab, and if PocketLingo appears in the list, tap to select it, and tap the Stop button.
4. Tap the OK button in the top-right corner of the screen to close the Memory window.
5. Tap the Remove Programs icon also in the System settings page.
6. Tap "HLCSOft PocketLingo ESL" from the list and then tap Remove.
7. You may want to use FileExplorer or another file browser to ensure all related files were deleted from the system:
 - a. If you installed the program to your device, navigate to \My Device\Program Files\HLCSOft\PocketLingo, delete the ESL folder and all of its contents.
 - b. If you installed the program to your memory card, navigate to \My Device and open your memory card folder, delete the "HLCSOft PocketLingo ESL" folder and all of its contents.

Registration

Why Register?

Registering your PocketLingo is the only way of enabling the paid (complete) version of the software. It will also allow us to provide you with technical support.

How to Register

When you purchase PocketLingo, we will e-mail a unique **Registration Code** to you.

Upon receipt of this number, please enter the **Registration Code** in your program's registration screen.

If you lose your Registration Code or have difficulties with the registration process, please contact us by using our support form at <http://www.pocketlingo.com/help/support-submit.asp>.

Where to Find Your Owner Name

Start PocketLingo. Tap Help and select Registration. Your Owner Name will be displayed on the screen below "Your Owner Name".



PocketLingo ESL 4:46

Registration

If you would like to continue to use this application, please buy and get a registration code from <http://www.pocketlingo.com> If you have registered already, please enter your code below:

Registration Code:

Your Owner Name:

John Harvard

The Registration Code - What, Where, and How







The Registration Code is a combination of letters and numbers. The registration code consists of the numbers 0-9 and letters A-F only (for example: 1D35FC67A1). To enter your Registration Code:

1. Start PocketLingo.
2. Go to **Menu > Help > Registration**.
3. Type your Registration Code into the PocketLingo registration screen.
4. Tap **Register** to continue or **Not Yet** to quit the registration process. If you quit, you may return later to register the product. The full dictionary will only be available after you have entered the correct Registration Code and completed the registration process by tapping **Register** on the registration screen.

Using PocketLingo

Overview

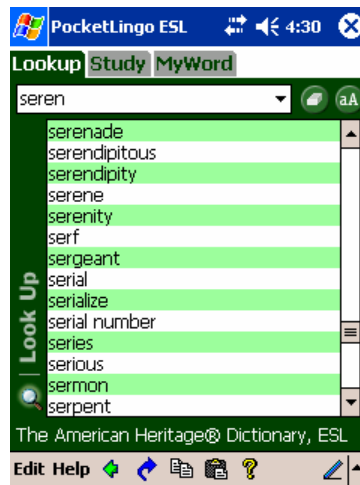
PocketLingo's main view contains the following objects:

	<i>Back graphic</i> button Allows you to flip between the current and last viewed screen.
	<i>Help</i> button Displays tips on using PocketLingo.
	<i>Search query field</i> Enter the word you would like to look up.
	<i>Select and Go</i> ("Jump") Select the word within the definition to go directly to the definition of the selected word.
	<i>Eraser</i> button Deletes the entry in the Search query field.
	<i>Font size</i> button Choose between large or regular fonts.

The **Tips**, **Abbreviation**, **Registration** and **About PocketLingo** screens can be found by tapping on **Help** menu.


Lookup Tab

1. To search for a word, type it into the Search query field and a list of possible matches will be displayed below.

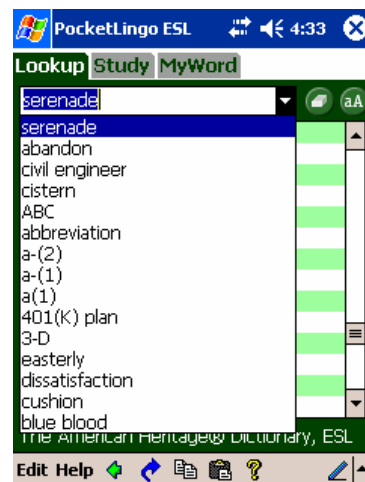


2. Tap the word you want on the list.

Tip: You can also enter your query using the standard keyboard of your handheld device.

If you have a word in your clipboard, you can paste it into the query field by tapping on .

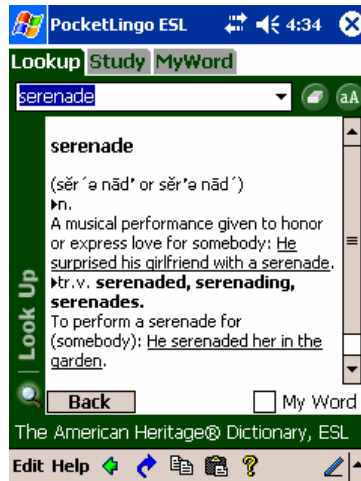
If you are looking up a word you have looked up recently, click on the arrow next to the search query field. PocketLingo will show up to 20 recently looked up words in each dictionary.




If you want to start another search, tap the eraser button, which will erase the current contents of the search query field. Alternately, you can use the backspace key on the keyboard to erase one character at a time.

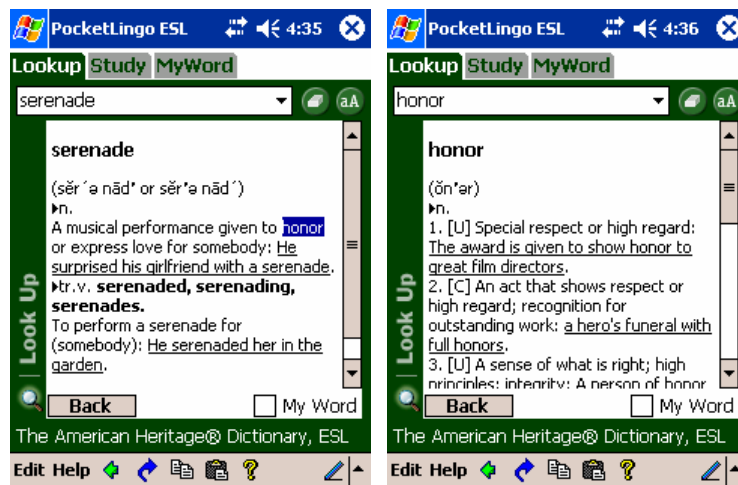
Definition

The definition will be displayed after tapping the word in the **LookUp** screen. Use the scroll buttons to view the entire definition.



If you would like to add the word to the MyWord list, check on the MyWord box, as shown here: ☒ My Word The **Back** button will return you to the term list.




A new feature in PocketLingo, select any word in the definition of the current word and tap on  (Jump) to instantly search for that selected word.

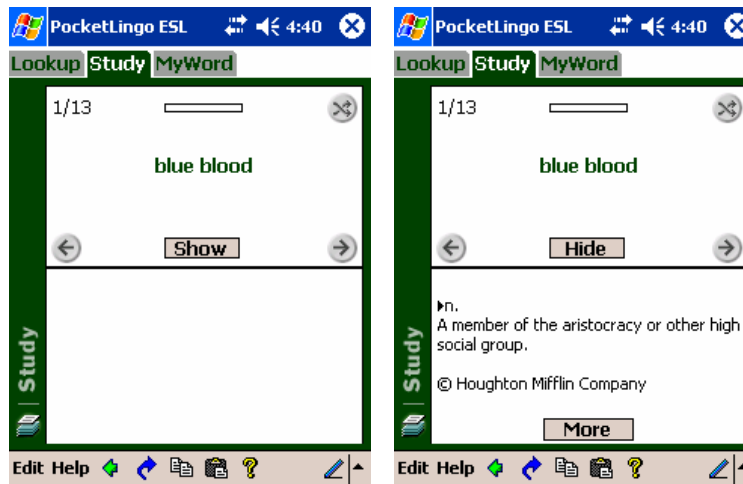



If the word is in the dictionary, the definition for that word will display. If the word tapped does not exactly match any term, the closest match will be displayed at the top of the term list.

Study Tab







The Study function is designed to help you build a more powerful vocabulary. It is similar to but much more powerful than a written study card.

1. Tap on the **Show** / **Hide** button to show or hide the definition of the word.
2. Tap on the **More** button to bring up a complete definition of the word.
3. Use the  button to review the previous word, the  button to review the next word on the list, or the  button to review a random word from the MyWord list.



The Goal Bar  shows how long the word has been on the list.

Study Control

	<i>Previous</i> button Moves to previous word on the list.
	<i>Next</i> button Moves to next word on the list.
	<i>Shuffle</i> button Shuffles the words on the list.
	<i>Goal Bar</i> Indicates how close you are to your goal.
	<i>Show</i> button Shows the definition of the word.
	<i>Hide</i> button Hides the definition of the word.

More

More button

Brings up a complete definition of the word.

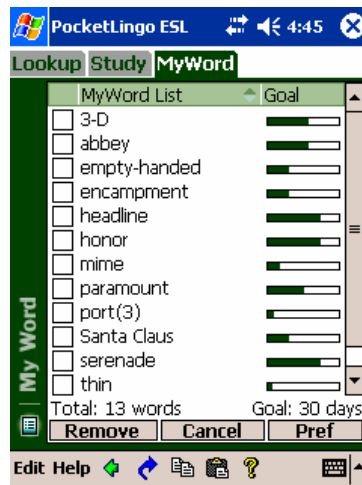
MyWord Tab

MyWord displays the complete list of words that you have selected to save. This allows you to see in a quick glance all the words you plan to study. You can save up to 1000 words in this list.

To see the definition of a particular word, just tap on the word in the list. You may use the scroll bar to view the entire list.

To sort the list in alphabetical (ascending or descending) order, tap on

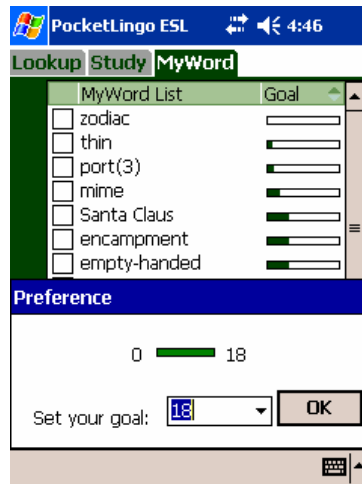
MyWord List ▲.



To sort the list by how long the words have been on the list, tap on **Goal** ▲.


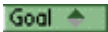


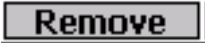


The **Pref** button allows you to set a goal for how quickly you want to learn the words on your list. The darkened portion of the Goal Bar indicates how long the word has been on the list and allows you to see how close you are to your goal.



To remove a word from the list, first tap the check box next to the word, and then tap the **Remove** button.

MyWord Control

	<i>MyWord List</i> Sorts the list in alphabetical order.
	<i>Goal</i> Sorts the list by how long the words have been on the list.
	<i>Preferences</i> button Sets a goal for how quickly you want to learn the words.
	<i>Goal Bar</i> Indicates how close you are to your goal.
	<i>Remove</i> button Removes a word from the list.

Troubleshooting

Q: My Registration Key Does Not Work

The registration code is based off of your Owner Name as it is entered in your device (including any special characters). The fastest way to check your Owner Name is to look at the PocketLingo registration screen where it is listed.

1. Tap PocketLingo icon on your PocketPC device.
2. Tap Help > Registration
3. Your Owner Name is listed under the text “**Your Owner Name:**”



If your actual Owner Name is different from the one you entered during the purchase process, please send the correct one to us by using our support form at <http://www.pocketlingo.com/help/support-submit.asp>.

Q: My Owner Name was wrong. What do I do?

If your actual Owner Name is different from the one you entered during the purchase process, please send the correct one to us by using our support form at <http://www.pocketlingo.com/help/support-submit.asp>.

Q: How do I check available space on my PocketPC?

To check the space you have on your PocketPC device, please do the following:

1. Tap Start->Settings on your device.
2. Tap the “System” tab at the bottom.
3. Then tap on "Memory". You will see the Free Memory space.

Please note that you will need about 8.4 MB of space to install PocketLingo ESL.

Q: How do I open the downloaded zip file?

In order to open the file you've downloaded (PocketLingoESL_Pocket_PC_v1_1.zip), please "unzip" the file first. We recommend WinZip for Windows users (www.winzip.com).

Q: I get an error that says “Dictionary Not Found”.

This error occurs when PocketLingo cannot locate a dictionary file and usually means the installation did not complete properly. Please re-install the program, and if you continue to have trouble please contact us by using our support form at <http://www.pocketlingo.com/help/support-submit.asp>

Q: I can't find the PocketLingo icon in my list of applications.

1. Tap Start, then Programs.
2. Look for PocketLingo icon.

If PocketLingo is **not** in the list, please follow the instructions in the User Guide to install PocketLingo to your device. You should also check to see if you have enough space to install PocketLingo (see the question: “How do I check available space on my PocketPC?”).

If you are still having difficulty please contact us by using our support form at <http://www.pocketlingo.com/help/support-submit.asp>

Contacting Us

If you have questions or comments, please contact us:

Website: <http://www.pocketlingo.com/help/support-submit.asp>