

Memo PLUS™ User Manual



Hands High Software

© 1998 Hands High Software. All Rights Reserved.

Memo PLUS for use with PalmPilot organizers

This manual, as well as the software described in it, is furnished under license and may only be used or copied in accordance with the terms of such license. The information in this manual is furnished for informational use only, is subject to change without notice, and should not be construed as a commitment by Hands High Software. Hands High Software assumes no liability for any errors or inaccuracies that may appear in this book.

Except as permitted by such license, no part of the publication may be reproduced, stored in a retrieval system, or transmitted, in any form or by any means without the prior written permission of Hands High Software.

PhoneLog and the Hands High logo are trademarks of Hands High Software.

Macintosh is a registered trademark of Apple Computer, Inc. Microsoft is a registered trademark of Microsoft Corporation.

Hands High Software makes no warranties, express or implied, including without limitation the implied warranties of merchantability and fitness for a particular purpose, regarding the software. Hands High Software does not warrant, guarantee or make any representations regarding the use or the results of the use of the software in terms of its correctness, accuracy, reliability, currentness or otherwise. The entire risk as to the results and performance of the software is assumed by you. The exclusion of implied warranties is not permitted by some states. The above exclusion may not apply to you.

In no event will Hands High Software, its directors, officers, employees or agents be liable to you for any consequential, incidental or indirect damages (including damages for loss of business profits, business interruption, loss of business information, and the like) arising out of the use or inability to use the software, even if Hands High Software has been advised of the possibility of such damages. Because some states do not allow the exclusion or limitation of liability for consequential or incidental damages, the above limitations may not apply to you.

For defense agencies: Restricted Rights Legend. Use, reproduction or disclosure is subject to restrictions set forth in subparagraph (c)(1)(ii) of the Rights in Technical Data and Computer Software clause at 252.227-7013.

For civilian agencies: Restricted Rights Legend. Use, reproduction or disclosure is subject to restrictions set forth in subparagraphs (a) through (d) of the commercial Computer Software Restricted Rights clause at 52.227-19. Unpublished rights reserved under the copyright laws of the United States.

Contents

Introduction	4
How does it work?	4
System Requirements	4
Getting Started	5
Installation	5
Default Memo Button	6
Using the Memo List	8
Working with Notes in the Memo List	8
Working with Drawings in the Memo List	9
Sorting and Filtering	9
Editing a Title	10
Changing the Font	10
Beaming a Memo	10
Editing a Note	11
The Command Menu	11
The Options Menu	12
Editing a Drawing	13
The Drawing Tools	13
Selecting a Memo PLUS Template	13
Erasing and Deleting a Drawing	14
Undoing	14
Changing a Drawing to Text	14
Other Options	14
Memo Details	15
Protecting a Memo	15
Setting an Alarm	16
Templates	17
Managing Templates	17
Template Editor	18
Editing Note Templates	18
Editing a Drawing	19
Saving and Installing Your Templates	20
Viewing Current Drawings and Templates	20
Submitting your Templates	20
Backing Up and Restoring Data	21
Restoring a Backup	21
Beaming	22
Common Questions	23

Introduction

Memo PLUS is a supercharged Memo Pad. To create Memo PLUS, we started with the built-in Memo Pad, and then added the features that PalmPilot users like yourself were requesting.

With Memo PLUS installed, you can take full advantage of the power of your PalmPilot. Memo PLUS has the following features:

- Improved graphics and toolbars
- Attachable drawings
- Templates for both memos and drawings
- Creation and modification date tracking
- Password protection
- Alarms
- Font selection for PalmPilots that normally do not allow font selection.

How does it work?

Memo PLUS shares the same information that your built-in MemoPad uses. You will notice that when you create or add a memo in Memo PLUS, it will also appear in your built-in Memo Pad. This gives you a big benefit...to edit memos on your PC, you use the desktop software that you normally use to edit your Memos. Memo PLUS is compatible with the PalmPilot desktop, as well as other contact managers like Microsoft Outlook, ACT, or Goldmine, when those programs are combined with the appropriate synchronization software.

Memo PLUS also saves additional information on to your PalmPilot, like drawings, extra category information, and alarms. However, this information is not visible in your desktop software.

System Requirements

Memo PLUS is compatible with all devices running Palm OS 2.0 and above. This will include the PalmPilot Personal, PalmPilot Professional, Palm III, IBM WorkPad, and any device that has a Palm upgrade card installed.

Memo PLUS is not compatible with the original Pilot 1000 or Pilot 5000, unless it has been upgraded with a Palm upgrade card.

Getting Started

Installation

With the release of the Palm III, there are now two programs available for installing PalmPilot software. Below are instructions for installing software using the Palm desktop version 3, and prior versions of the Palm desktop. You can see your Palm desktop version number by choosing “About Palm Desktop” from the Help menu, (or the Apple menu for Macintosh users.)

Palm Desktop 3.0 Installation

Start the Palm Install Tool by either selecting it from the Start menu in the Palm Desktop group, or by clicking the Install button on the left side of your Palm desktop software.



Click the Add button on the right side and select the MemoPlus.prc file. Click Open, then click the Done button. Next, put your PalmPilot organizer in its cradle and press the HotSync button. Tap the applications button on your PalmPilot, and then tap the Memo PLUS button to start Memo PLUS.

Installing with Palm Desktop 2.0 and Earlier

Start the InstApp application that came with your PalmPilot organizer. The InstApp program is located in your Pilot directory where you installed your other PalmPilot software.

If you are using Windows, you may have to locate InstApp using the Windows Program Manager or Windows Explorer. It might not appear in the Start menu or the Pilot program group.



Click the “Select” button and select the “MemoPlus.prc” file, and press OK. Then press the “Install” button and quit the application.

Memo PLUS is now ready to be installed on your PalmPilot organizer. The final step is to put your PalmPilot organizer in its cradle and press the HotSync button.

After HotSync has completed, tap the Applications icon on your PalmPilot. Tap the Memo PLUS icon to start Memo PLUS.

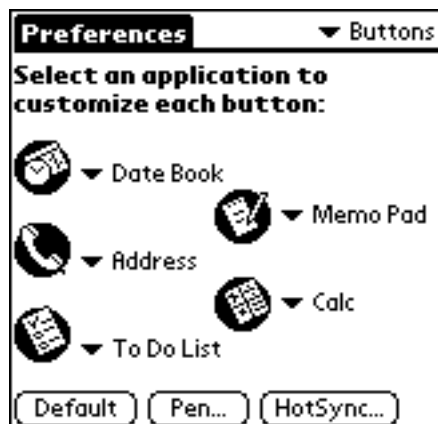
Default Memo Button



Since Memo PLUS is designed to replace your built-in Memo Pad, you should set up your PalmPilot to show Memo PLUS when you press the Memo button on your PalmPilot.

To set Memo PLUS to be your default Memo application, tap on your applications icon, then tap on the Prefs application. Once the Prefs application has started choose Buttons from the popup menu in the upper right corner. You will see the following screen:

Button Preferences

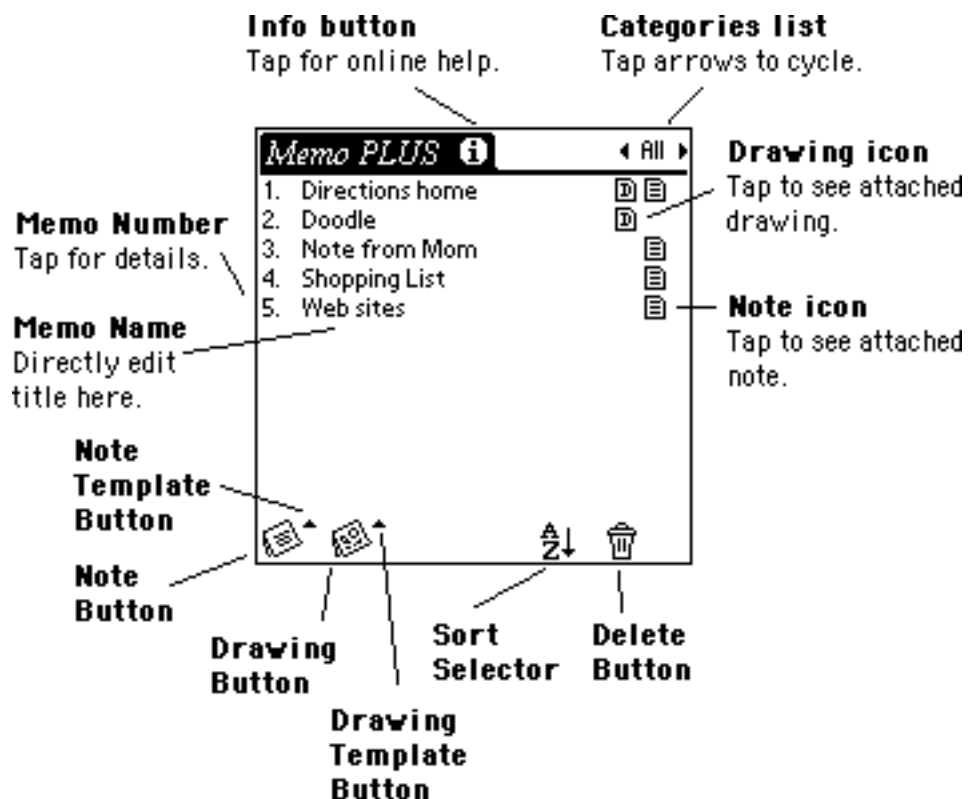


Tap on the drop down menu next to the Memo icon, and choose Memo PLUS from the list that pops-up. That is all there is to it! Test it out by pressing the Memo button. Memo PLUS should start.

Using the Memo List

The opening screen shows you a list of the Memos that you have created, and lets you add new memos, attach drawings, and work with templates. The various parts of the Memo List are pictured below:

Memo List



Working with Notes in the Memo List

Creating a New Note


To create a new note, tap the Note button. You will then be taken to the Note Edit screen. See Editing a Note for more information about the Note Edit screen.

Editing a Note

To view or edit a previously created note, tap the small note icon that is on the line with the note.

You will then see the note in the Note Edit screen.

Attaching a Note to a Drawing

To attach a note to a drawing, first select the line with the drawing by tapping on the text of that line. The line number will highlight, indicating that the line is selected. Then tap the note button. You can also start your note with a template by tapping on the arrow next to the Note button, and choosing your template. 

Deleting a Note

To delete a note, tap on the note title and then tap the trash can button.

Working with Drawings in the Memo List

Creating a New Drawing

To create a new drawing, tap the Drawing button. You will then be taken to the Drawing Edit screen. See Editing a Drawing for more information about the Drawing Edit screen.

Attaching a Drawing to a Note

To attach a drawing to a note, first select the line that contains the note by tapping on the text of that line. The line number will highlight, indicating that the line is selected. Then tap the drawing button. You can also start your drawing with a template by tapping on the arrow next to the Drawing button, and choosing your template.

Editing a drawing

To view or edit a previously created drawing, tap the small drawing icon that is on the line with the drawing.

You will then see the drawing in the Drawing Edit screen.

Deleting a Drawing

To delete a drawing, tap on the drawing title and then tap the trash can button.

Sorting and Filtering

Memos may be sorted either alphabetically or in reverse-alphabetic order by tapping on the Sort List at the bottom right of the screen.

To also filter your memo list by category, tap on the category name at the top right of the screen. You can quickly cycle through your categories by tapping the left and right arrows next to the category name.

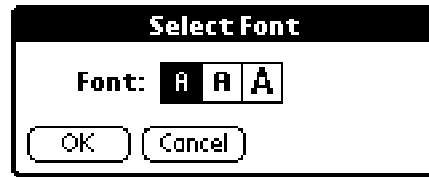
Editing a Title

Memo PLUS allows you to edit the title of each Memo right in the Memo List. Just tap the title of the memo and use graffiti to edit the memo title. Editing the memo title will not affect the contents of your note.

Changing the Font

You may change the font of the Memo list screen by choosing Font from the Memo menu. Tap on the letter representing the font you want to display.

Font Selector



To display the Memo menu, tap the Menu button at the lower left corner of your PalmPilot screen, and then tap “Memo”, displayed in the popup menu along the top of the screen.

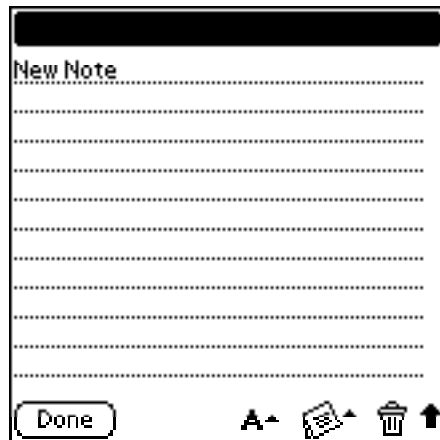
Beaming a Memo

If you are using a Palm computing device that supports beaming, you can beam a memo, together with its note and drawing, to another user of Memo PLUS. See the chapter on Beaming for more information.

Editing a Note

To edit a note, tap on the note icon next to the note, or tap on the Note button at the bottom of the screen. You will be shown the following screen:

Note Edit screen



Changing the Font

To change the font displayed in the memo, tap the letter “A” at the bottom of the screen. Select the letter that represents the font you want to display.

Selecting a Template

To insert a Memo PLUS template, tap the note button at the bottom of the screen. Select a template from the list that pops up. See the Templates chapter to learn more about templates.

Deleting a Note

To delete the displayed note, tap the trash can button. If a drawing is associated with this note, only the note portion will be deleted, and not the drawing.

The Command Menu

Tap the menu button, then tap the word Command at the top of the screen, to display the command menu.

The Note Command Menu

Command	Edit	Options
Save as Template	✓	/S
Edit Note Templates...	✓	/E
Beam Note	✓	/B
Compute Size	✓	/Z

Saving the Note as a Template

Choose Save as Template to automatically put the note into the template list. See the Template chapter for more information on Templates.

Editing Note Templates

To jump to the template edit screen for notes, choose Edit Note Templates.

Beaming a Note

Choose Beam Note to beam the note to another Memo PLUS user via the infrared port. See the Beaming chapter for more information on beaming.

Compute Size

To display the number of letters in the note, choose Computer Size.

The Options Menu

To display the options menu, tap the menu button at the lower, left corner of your PalmPilot screen, then tap the word “Options” that appears along the top.

Options Menu

Command	Edit	Options
Go to Top of Page	✓	/T
Go to Bottom of Page	✓	/O
Underlined	✓	/D
Phone Lookup	✓	/L

Jumping to the Top or Bottom of a Notes

The first two selections of the Options menu let you quickly scroll up or down to the top or bottom of the memo.

Hiding and Showing Underlines

To hide the underlines that are display in the note, choose Underlined from the menu. To show the underlines, choose Underlined again.

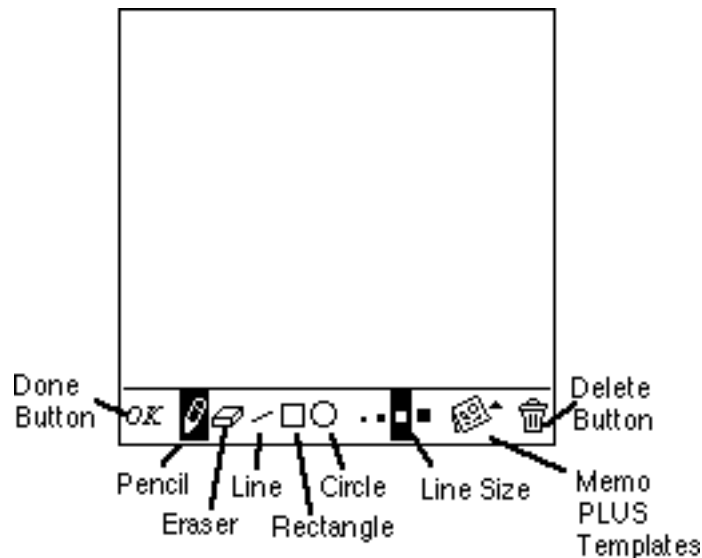
Looking up a Phone Number

To paste a name and phone number from the address book into the note, choose Phone Lookup.

Editing a Drawing

To edit a drawing, either tap on the Drawing button at the bottom of the Memo list, or tap on the small drawing icon on a line that contains a drawing. You will then see the following screen:

Edit Drawing screen



The Drawing Tools

Select a drawing tool by tapping on one of the icons along the bottom of the screen. After selecting a tool, tap on the drawing area above the line and drag to draw with your tool. The available tools are: Pencil, Eraser, Line, Rectangle, and Ellipse.

The dots next to the drawing tools let you specify the line width of the tool. Tap on the dot that is the size you want to use.

Selecting a Memo PLUS Template

To start a drawing with a template, tap on the drawing icon in the lower right corner of the screen. If you have created drawing templates, a list of templates will pop up to choose from. See the Templates chapter for more information on templates.

Erasing and Deleting a Drawing

To erase a drawing, tap the menu button, and choose Clear All from the Edit Menu. To delete a drawing and return to the task list, tap on the trash can icon.

Undoing

To undo your last drawing action, choose Undo from the Edit menu. If you change your mind, you can choose Undo from the Edit menu again to redo your last drawing action.

Changing a Drawing to Text

If you are in a situation where you need to quickly jot down a note, but you do not have the time to carefully graffiti in the text, you can use a drawing to write your note, and then later convert your handwriting to text.

To help with the process of converting your writing to text, select “Show Edit Text” from the Edit menu. A window will pop-up along the bottom of the screen. Enter text into this window using graffiti, then tap the Copy button to copy the text to the clipboard. You can then go to a task in ToDo PLUS, or any other PalmPilot application, and choose Paste from the Edit menu to paste your text into a field.

Other Options

You can add your drawing to the template list by choosing Save as Template from the Drawing menu. See the Templates chapter for more information.

A drawing can also be beamed to another user of Memo PLUS, if your hardware and the other user’s hardware support beaming. See the chapter on Beaming for more information.

Memo Details

To access the detail information of a memo, tap on the memo number. You will then see the following screen:

Details screen

The screenshot shows a 'Memo details' window with a title bar containing the text 'Memo details' and an information icon. The window contains the following fields: 'Created: Tue 2/9/99', 'Modified: Tue 2/9/99', 'Category: ▼ Unfiled', 'Private: ☐', 'Password: ☐', and 'Alarm: ☒ at: 10:57 am'. Below the alarm time, there are fields for 'in: ... hrs. 30 min.' and 'on: 2/9/99' with a dropdown arrow. At the bottom left are 'Done' and 'Cancel' buttons, and at the bottom right is a trash can icon.

This screen lets you choose various options for the memo, and displays information about the creation and modification dates.

Protecting a Memo

To prevent a memo from being seen, you have two options, as follows. Both options require that the security features of your PalmPilot be enabled. To turn on your security features, tap the Applications button at the lower left corner of your PalmPilot screen, and then choose the Security application. See your PalmPilot users manual for more information about security features.

Private

A memo that is protected by the Private checkbox will not display in the Memo List when private records are hidden in the Security application of your PalmPilot. Once this feature is checked and the memo is hidden, the only way to see your Memo or change this options is to choose “Show” in the Security application of your PalmPilot.

Password

The password protected memo will show in the Memo List. However, when you tap on the note, drawing or details of the memo, you will be asked for your password. This is the same password you assigned in the Security application of your PalmPilot.

Important Note: For the password function to work, you must have a password assigned in the Security application AND hide private records.

Previous versions of Memo PLUS did not implement the password function correctly. Even though you could password protect a memo in Memo PLUS, someone could see the contents of the memo by starting the built-in MemoPad application. This is no longer a problem, provided you hide private records in the Security application.

Setting an Alarm

Tap the alarm checkbox to display the alarm options and to set an alarm.

You can either set an alarm for a particular time, or in a particular number of minutes from the current time.

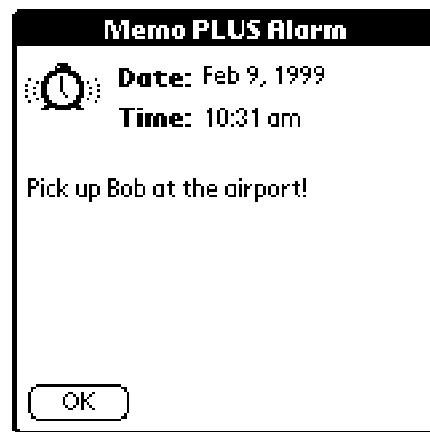
To set an alarm for a particular time, tap on the number you want to change in the “at:” row, hold the pen down, and drag up for a bigger number, or down for a smaller one. Tapping the AM/PM button will toggle it back and forth.

To set an alarm a certain number of minutes in advance of the current time by filling in the hours and minutes fields in the “in:” row.

You can even set an alarm for a particular day by tapping the date in the “on:” row. Tap the arrow next to the date to quickly choose tomorrow’s date, the end of the week, or the end of the month.

When an alarm goes off, you will hear the standard PalmPilot alarm sound, and a screen similar to the one below will appear.

Alarm screen

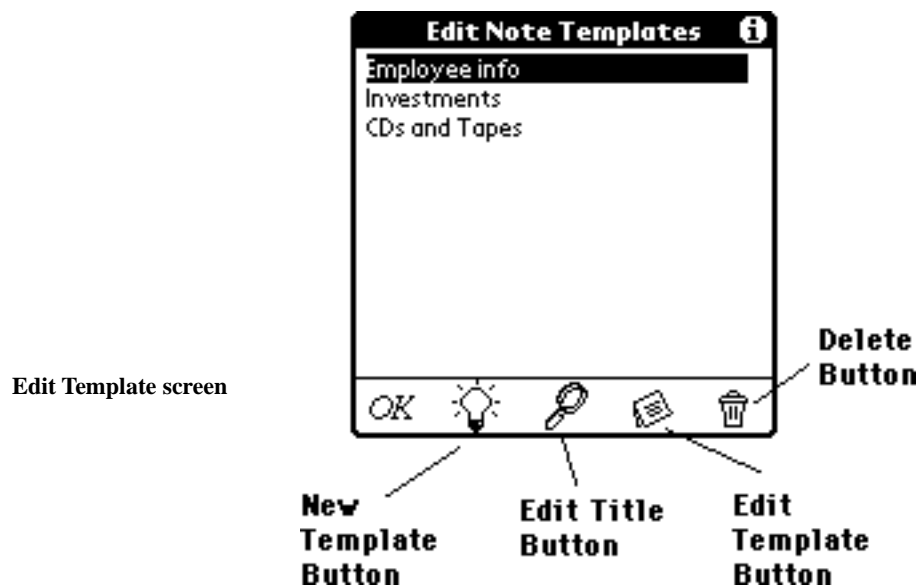


Templates

Templates save you time by giving you a way to start your memos and drawings from previous memos and drawings that you have saved. See the Memo List chapter for information on starting a new drawing or note from a template.

Managing Templates

To edit your templates, choose Edit Drawing Templates, or Edit Note Templates from the Command menu. You will see a screen similar to the following:



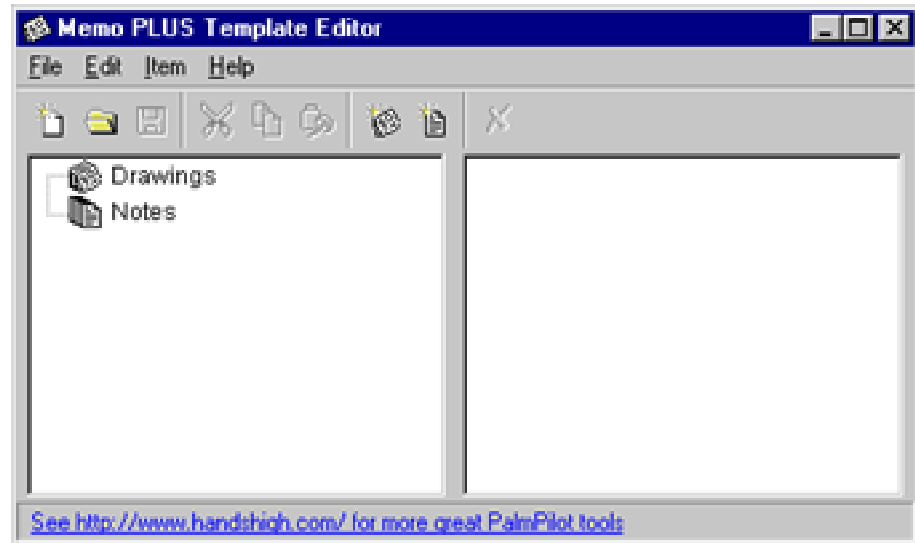
To create a new template, tap the “Light Bulb” button. The note or drawing screen will appear, to let you create the template, and the template will have the title of “New Template”.

To edit the title of a template, tap on the title of the template you want to change, and then tap the “Magnifying Glass” button.

To edit a template itself, select the template by tapping on it, then tap the Edit Template button.

Template Editor

Template Editor Screen

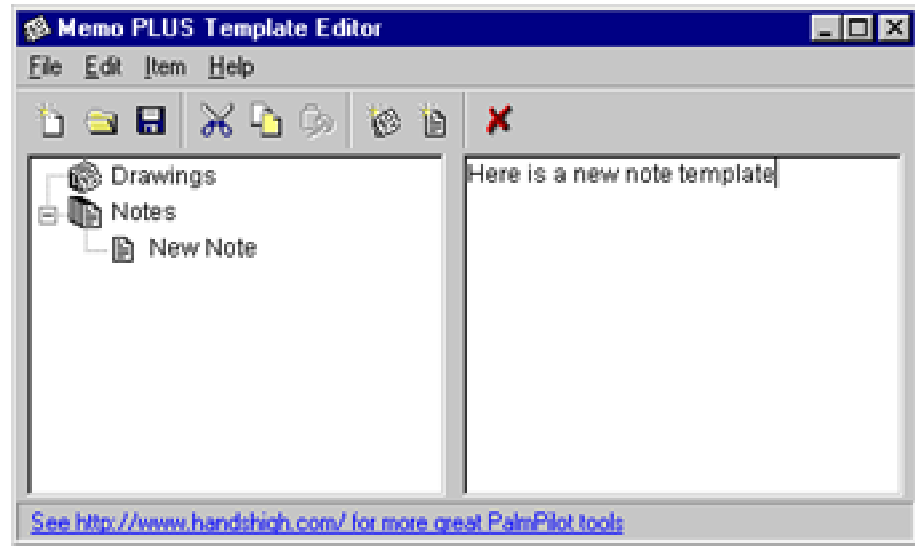


Memo PLUS comes with a template editor for Windows 95 and Windows NT users. To start the editor, double click on the TempEdit.exe file. You will then see the above screen

Editing Note Templates

To create a note template, choose New Note from the Item menu. Alternatively, you can click the New Note button near the right side of the toolbar, or right click and choose New Note from the menu.

Creating a new note



Add the text of your note template in the frame on the right. Click on the name of the template in the frame on the left to edit the template name.

Editing a Drawing

To create a drawing, first start a paint program of your choice, create your drawing, then select the drawing and choose Copy from the Edit menu. Switch back to the Template Editor, and choose New Drawing from the Item menu, or right click and choose New Drawing from the menu, or tap the New Drawing icon in the toolbar. Select Paste from the edit menu, and your drawing will be pasted into the frame at the right.



Creating a new drawing

When you paste your picture, the Template Editor will convert the picture to black and white, and crop the picture to 160 pixels x 160 pixels, the size of the PalmPilot screen.

Saving and Installing Your Templates

Now that you have created some new templates, save the template file by choosing Save from the File menu. Enter a name for your template file, and end the name with “.PDB”.

Then, start the Palm Install Tool and install the file that you created. Use the same procedure you used when you installed Memo PLUS.

HotSync, and start Memo PLUS. Your new templates are now ready to use.

Viewing Current Drawings and Templates

You may use the Template Editor to view drawings that you have created on your PalmPilot, and to view your note and drawing templates that are installed in your PalmPilot.

Choose Open from the File menu, and navigate to your backup directory. Your backup directory is in your user name directory. For example, if your user name is Joe Shmoe, your backup directory would likely be at C:/palm/ShmoeJ/backup/.

Open the file you would like to view, as follows:

MemoPlusDrawingDB.PDB - Drawings attached to Memos

MemoPlusDrawingModelDB.PDB - Drawing Templates

MemoPlusNoteModelDB.PDB - Note Templates

You can view the contents of these files, but you will not be allowed to save any changes you make to these files to prevent corruption of your PalmPilot databases. If you would like to edit your drawings or templates, you must save them to a different file using the Save As command from the File menu, make your changes in the new file, then install the new file as a template.

Submitting your Templates

If you have a great template that you use all the time, why not submit it for the rest of the world. We maintain a library of templates on the Hands High Web site (<http://www.handshigh.com/>) submitted by Memo PLUS fans like you. To submit a template, just email it to us at support@handshigh.com!

Backing Up and Restoring Data

Every time you HotSync, the HotSync manager automatically makes a copy of your Memo PLUS databases and puts it on your desktop computer.

The name of the backup files are:

MemoPlusCategoryDB.PDB - Category specific information

MemoPlusDrawingDB.PDB - Drawings attached to memos

MemoPlusNoteModelDB.PDB - Note templates

MemoPlusDrawingModelDB.PDB - Drawing templates

The notes that are attached to memos are backed up in the memopad directory and are maintained by MemoPad conduit automatically.

It is a good idea to occasionally save a copy of your backup directory in case your hard disk crashes or your PalmPilot organizer has a problem.

Restoring a Backup

On rare occasions, your PalmPilot organizer may have a problem that requires you to reinstall your backup files. Do the following steps in order to reinstall each file.

- 1) Make a copy of your current backup directory.
- 2) If Memo PLUS is not installed, follow the installation instructions at the beginning of this manual to install Memo PLUS.
- 3) Start the Palm Install tool. This is the same application you used to install Memo PLUS.
- 4) Install the .PDB files the same way you would install a PalmPilot application by clicking the Select button, selecting the file, and clicking the Install button.

Beaming

If your PalmPilot has an infrared port, you will be able to beam Memo PLUS memos to other PalmPilots with an infrared port and Memo PLUS installed.

Select the memo you want to beam, and choose Beam Memo from the Command menu. Then, point your PalmPilot at another PalmPilot that also has Memo PLUS installed. The other PalmPilot will display a message asking the user to confirm acceptance of the memo.

When you beam from the Memo List, the receiving PalmPilot will get both the attached note and drawing. If instead you are editing a note or drawing, and beam from one of those screens, the receiving PalmPilot will only receive the information you are viewing.

If you are having trouble beaming, make sure that your PalmPilots are between one and three feet apart, that the infrared ports are not obstructed, that ambient light is not extremely bright, and that Beam Receive is on in the General preferences of the receiving PalmPilot.

To beam a memo to someone who does not have Memo PLUS, you can do one of the following:

- Tell your friend what a great application Memo PLUS is and convince him or her to buy a copy.
- Switch to the built-in MemoPad application and beam from there.

Common Questions

Can I delete the built-in MemoPad application?

Currently you cannot delete the built-in applications. However, even if you could, deleting them would not free up any memory. The built-in applications are stored in ROM and are a permanent part of the PalmPilot.

What is the largest memo I can create?

Currently you cannot create a memo that is larger than 4000 characters. This is caused by a limitation in the PalmPilot desktop software. However, 3Com will likely fix this in the future.

Is there somewhere I can find templates that others have created?

Yes! See our Web site at <http://www.handshigh.com/> for a library of templates created by other Memo PLUS fans.

Why do I have a greater number of Memo PLUS records than built-in Memo records when I look in the Memory application?

It is perfectly normal to have a greater number of records when you check Memo PLUS in the Memory application. Indeed, the total number of records shown for Memo PLUS equals the number of actual memo items plus the number of note or drawing templates plus the number of drawings plus the number of categories!